



Equipped with *AEM DRYFLOW* Filter  
No Oil Required!

**Kit Part Number: 21-9024**

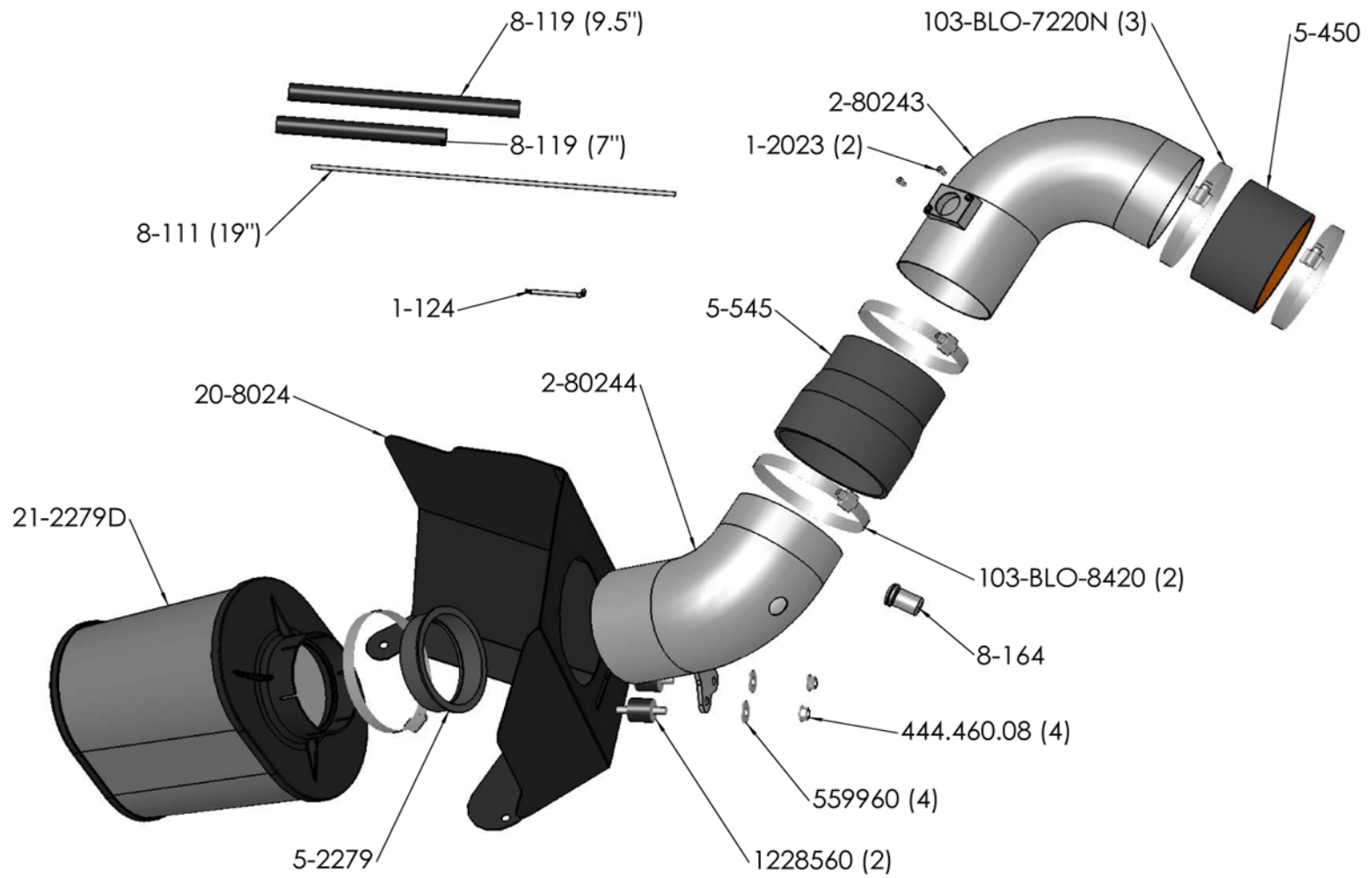
2006 GMC Sierra/Chevy Silverado	CARB EO # D-392-31
2007 GMC Sierra Classic/Chevy Silverado Classic	CARB EO # D-392-31

**Note: This kit fits GMT-800 Chassis Only 6.6L Duramax Diesel**

© 2009, Advanced Engine Management, Inc. AEM is a registered trademark of Advanced Engine Management, Inc. All rights reserved.



Advanced Engine Management Inc.  
2205 126<sup>th</sup> Street, Unit A  
Hawthorne, CA 90250  
Phone: 310.484.2322  
<http://www.aempower.com>



### BILL OF MATERIALS

Quantity	Part Number	Description
1	2-80243	Inlet Pipe, Upper
1	2-80244	Inlet Pipe, Lower
3	103-BLO-7220	#72 hose clamp
2	103-BLO-8420	#84 hose clamp
2	1228560	Rubber Mount, M8
4	559960	Washer, M8
4	444.460.08	Nut, M8
1	5-450	4.50 x 3.00 Coupler
1	5-545	4.50/5.00 x 3.00 Reducer Coupler
1	8-164	Adapter, Nipple
1	20-8024	Heatshield
2	1-2023	Bolt, 8-32
1	1-124	Torx Tool T20
19"	8-111	Rubber Edge Trim
9.5"	8-119	Sponge Rubber Gasket
7"	8-119	Sponge Rubber Gasket
1	21-2279D	Air Filter, 9" Workhorse
1	5-2279	Air Filter Adapter
2	10-922BFHDV	Brute Force HD Emblem
1	10-8024	Instructions

## 1. Preparing Vehicle

- a) Make sure vehicle is parked on a level surface.
- b) Set parking brake.
- c) If engine has run in the past two hours let it cool down.
- d) Disconnect all negative battery terminals
- e) Do not discard stock components after removal of the factory system.

## 2. Removal of Stock System



a) Stock intake system.



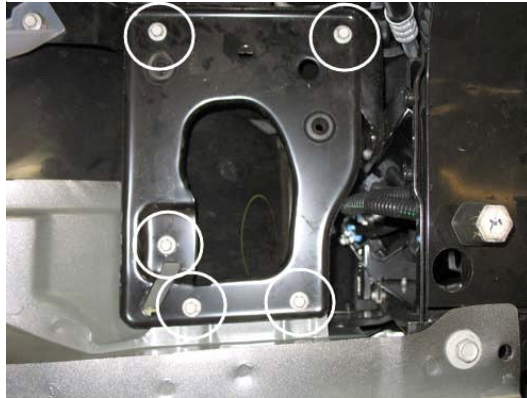
b) Unplug the mass air flow sensor (MAF) wiring harness.



c) Loosen the hose clamps on both ends of the inlet tube. Remove the inlet tube from the engine bay.



d) The air filter housing is held in place by two grommets on the mounting plate. Gently lift up on the air filter housing and remove it from the engine bay.



**e)** Remove the five bolts securing the air filter housing mounting plate to the vehicle chassis. Remove the mounting plate. Remove any one of the three grommets on the plate to be used later.



**f)** Remove the plastic cover directly behind the headlight housing by using a flathead screwdriver to pry the four barbed studs off.



**g)** Remove the factory air filter restriction gauge.



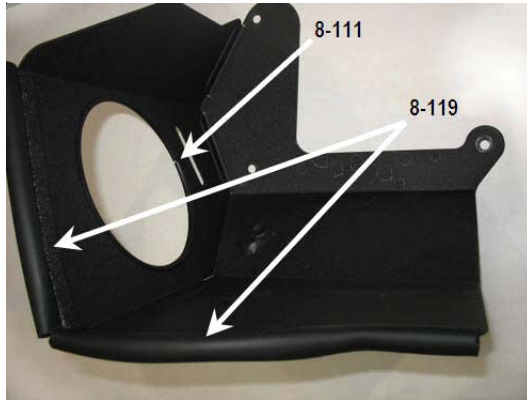
**h)** Using the supplied tamper-proof torx key, remove the two bolts securing the MAF sensor to the air filter housing. Carefully remove the MAF sensor from the housing.



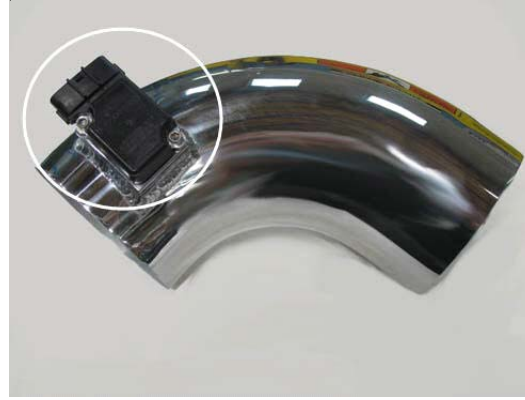
**i)** Stock intake system removed.

**3. Installation of Brute Force HD Intake**

a) When installing the intake system, do not completely tighten the hose clamps or mounting tab hardware until told to do so.



**b)** Install the supplied rubber edge trim (8-111) onto the edge of the hole in the heat shield and the sponge gaskets (8-119) onto the top edge of the heat shield.



**c)** Install the previously removed MAF sensor into the upper intake pipe using the two supplied 8-32 bolts (part# 1-2023)



**d)** Install the heat shield in the engine bay aligning the holes with the mounting plate bolt locations. Secure it using three of the bolts removed in step 2e).



**e)** Install the straight coupler (5-450) onto the turbo inlet pipe and secure using a #72 hose clamp (103-BLO-7220)



**f)** Install the nipple onto the pipe (use soapy water to aid installation). Place the nipple into the pipe at an angle and rotate it until the groove engages the pipe.



**g)** Install the rubber mounts and secure using the M8 washers and nuts.



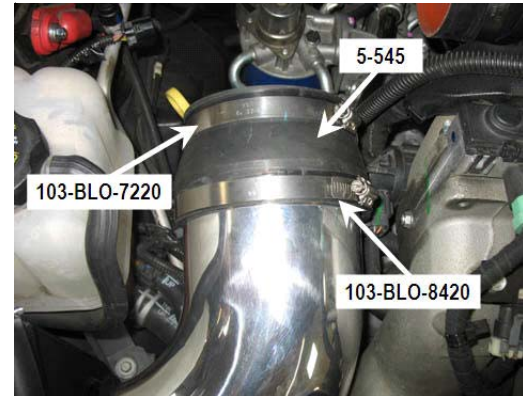
**h)** Center the pipe within heat shield pipe opening and tighten the M8 nuts.



**i)** Install the #84 hose clamp (103-BLO-8420) and the air filter adapter (5-2279) onto the filter.



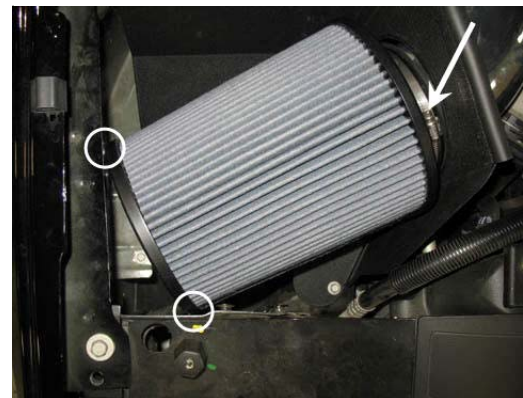
**j)** Fit the filter onto the pipe (use soapy water to aid installation). Make sure the filter adapter does not come loose when installing. Also, verify that the filter is fully seated onto the pipe.



**k)** Install the reducer coupler (5-545). An #84 hose clamp (103-BLO-8420) should be installed on the pipe side of the coupler, while a #72 hose clamp (103-BLO-7220) should be installed on the opposing side.



**l)** Install the upper intake pipe. Make sure that the reducer coupler installed in step 3k is positioned as close to the MAF as possible.



**m)** Position filter to ensure that there is at least a 1/8" clearance on each side. This may require repositioning of the pipe within the heat shield opening (refer to step 3h). Make sure the filter is fully seated onto the pipe, then tighten the hose clamp



n) Reinstall the mass air flow sensor (MAF) wiring harness removed in step 2b.



o) Install the filter restriction gauge removed in step 2g.



**Stock Intake System**



**AEM Brute Force HD Intake Installed**



#### 4. Re-assemble Vehicle

- a) Position the inlet pipes for the best fitment. Be sure that the pipes or any other components do not contact any part of the vehicle. Tighten the rubber mount, all bolts and hose clamps.
- b) Check for proper hood clearance. Re-adjust pipes if necessary and re-tighten them.
- c) Inspect the engine bay for any loose tools and check that all fasteners that were moved or removed are properly tightened. Reconnect all negative battery cables.
- d) Start engine. Let truck idle for 3 minutes. Perform a final inspection before driving the vehicle.

#### 5. Service and Maintenance

- a) It is recommended that you service your AEM Dryflow filter every 20,000 miles for optimum performance. Use AEM Dryflow cleaning kit part # 21-110.
- b) Use aluminum polish to clean your polished AEM Brute Force HD intake pipe.
- c) Use window cleaner to clean your powder coated AEM Brute Force HD intake pipe. **(NOTE: DO NOT USE Aluminum polish on a powder coated AEM Brute Force HD intake pipe)**

<p>For technical inquiries e-mail us at <a href="mailto:tech@aempower.com">tech@aempower.com</a> or call us at 310.484.2322 Option # 3</p>
--

#### AEM Air Intake System Warranty Policy

AEM warrants that its intake systems will last for the life of your vehicle. AEM will not honor this warranty due to mechanical damage (i.e. improper installation or fitment), damage from misuse, accidents or flying debris. AEM will not warrant its powdercoating if the finish has been cleaned with a hydrocarbon-based solvent. The powdercoating should only be cleaned with a mild soap and water solution. Proof of purchase of both the vehicle and AEM intake system is required for redemption of a warranty claim.

This warranty is limited to the repair or replacement of the AEM part. In no event shall this warranty exceed the original purchase price of the AEM part nor shall AEM be responsible for special, incidental or consequential damages or cost incurred due to the failure of this product. Warranty claims to AEM must be transportation prepaid and accompanied with dated proof of purchase. This warranty applies only to the original purchaser of product and is non-transferable. Improper use or installation, use for racing, accident, abuse, unauthorized repairs or alterations voids this warranty. AEM disclaims any liability for consequential damages due to breach of any written or implied warranty on all products manufactured by AEM. Warranty returns will only be accepted by AEM when accompanied by a valid Return Merchandise Authorization (RMA) number. Credit for defective products will be issued pending inspection. Product must be received by AEM within 30 days of the date RMA is issued.

If you have a warranty issue, please call (310) 484-2322, extension 203 and our customer service department will assist you. A proof of purchase is required for all AEM warranty claims.